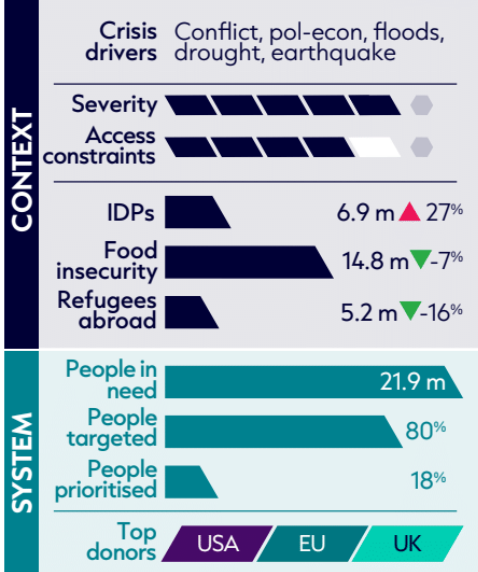
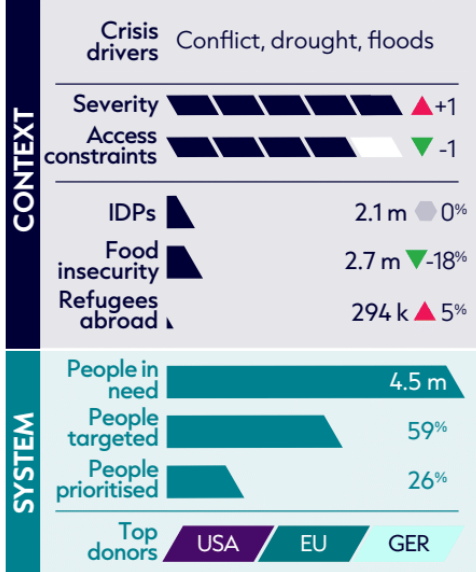




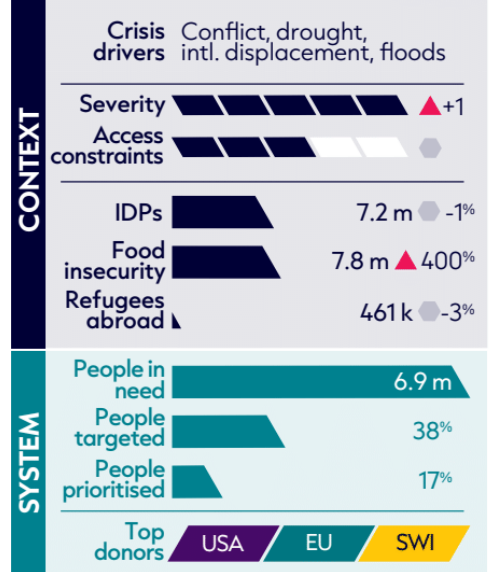
AFGHANISTAN 19 yrs



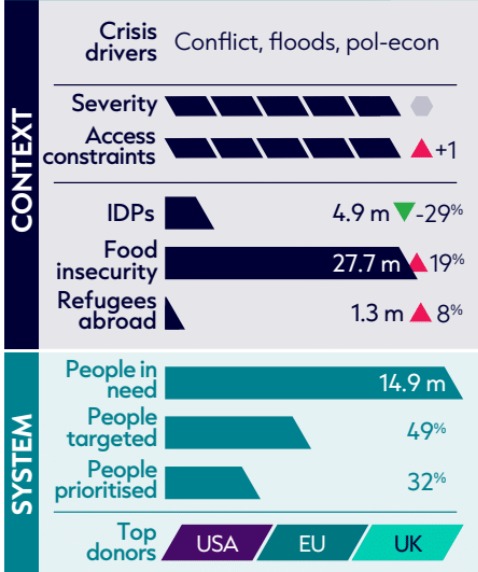
BURKINA FASO 15 yrs



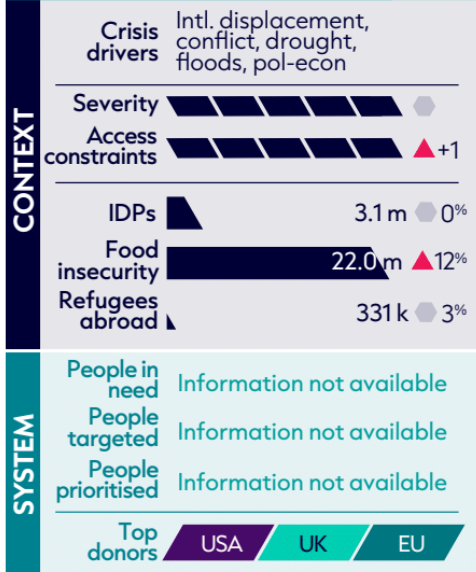
COLOMBIA 7 yrs



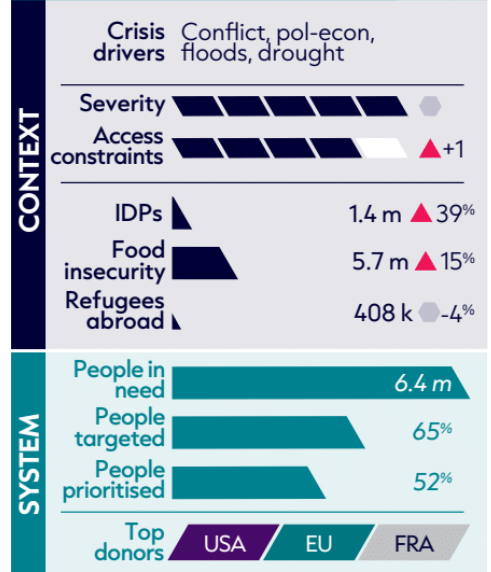
DRC 24 yrs



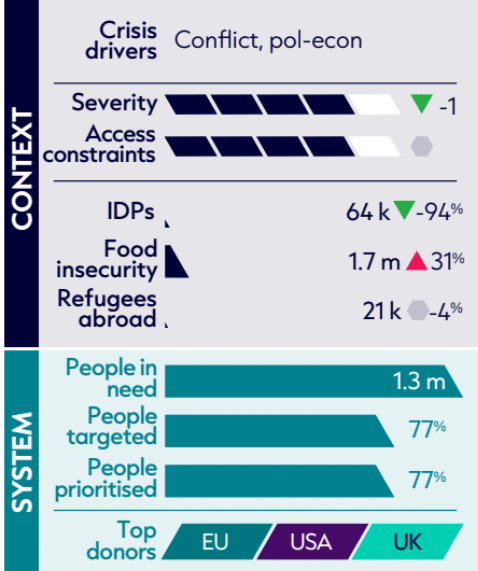
ETHIOPIA 10 yrs



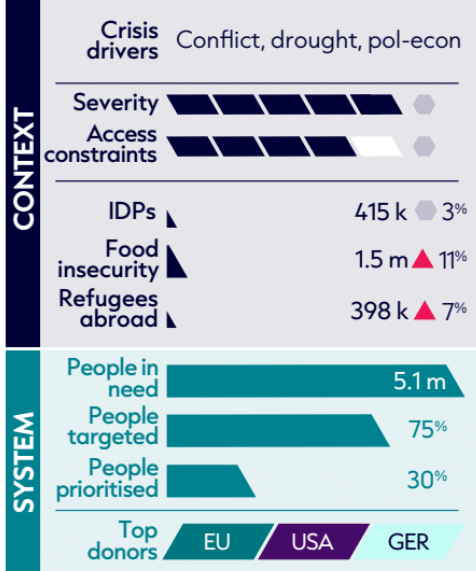
HAITI 17 yrs



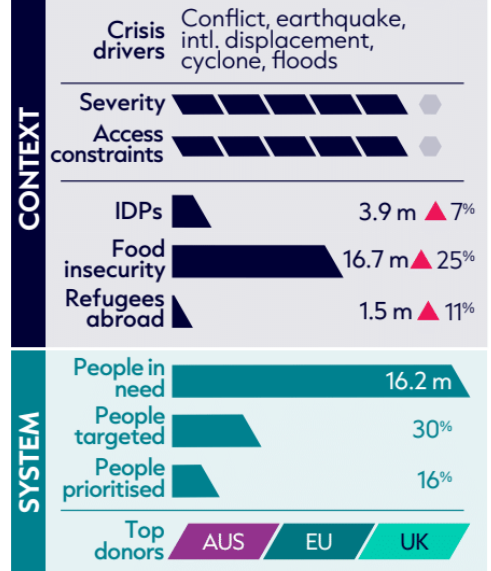
LEBANON 7 yrs

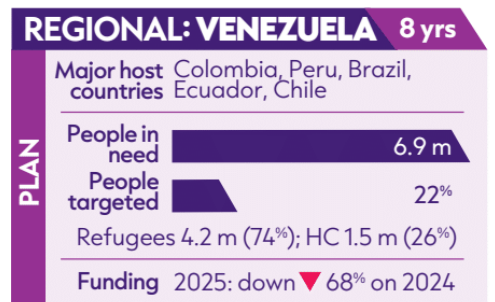
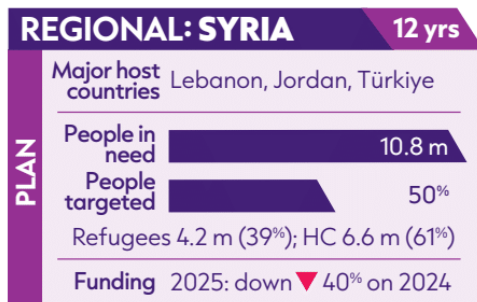
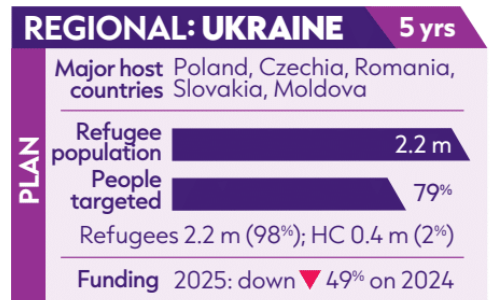
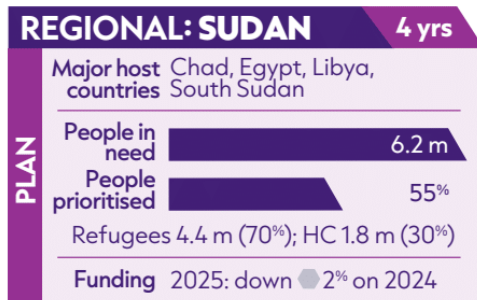
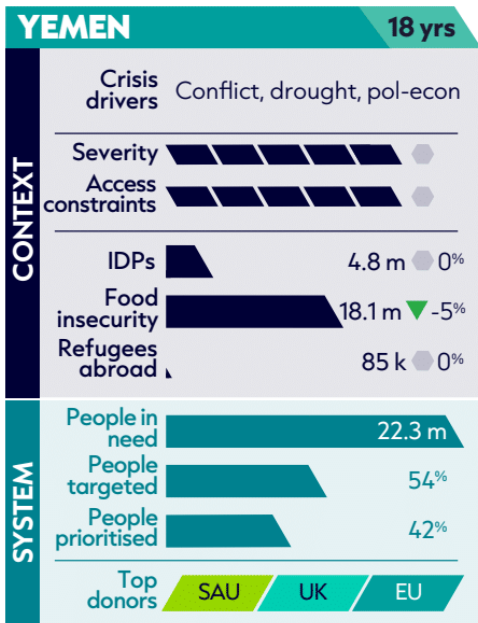
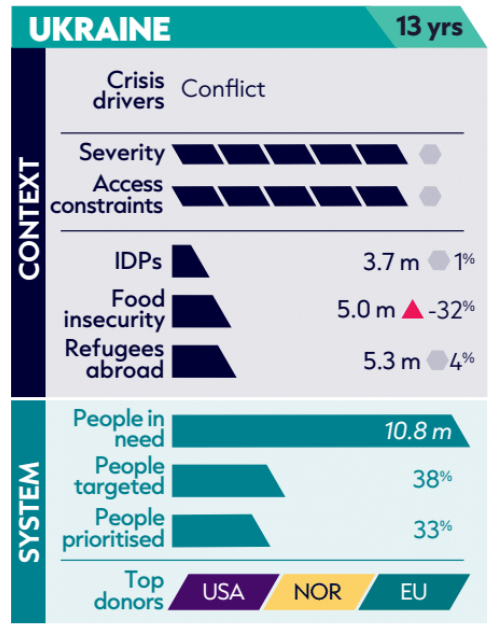
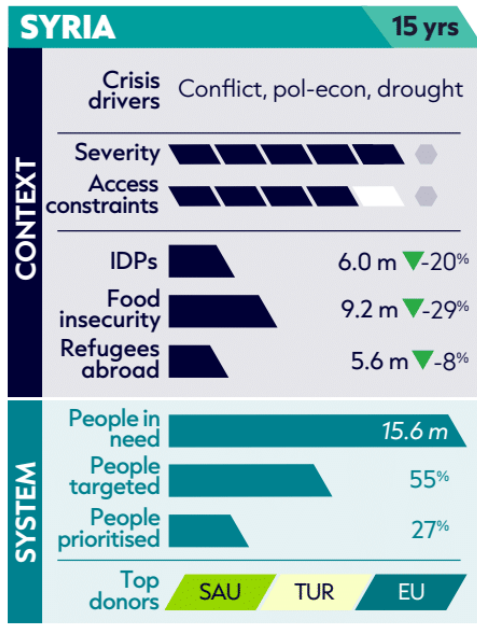
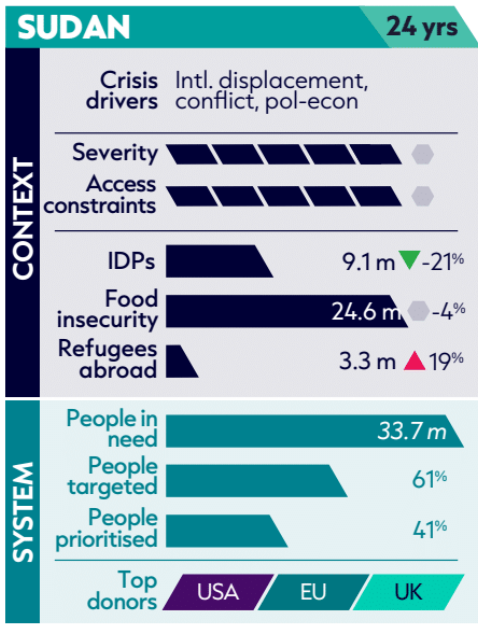
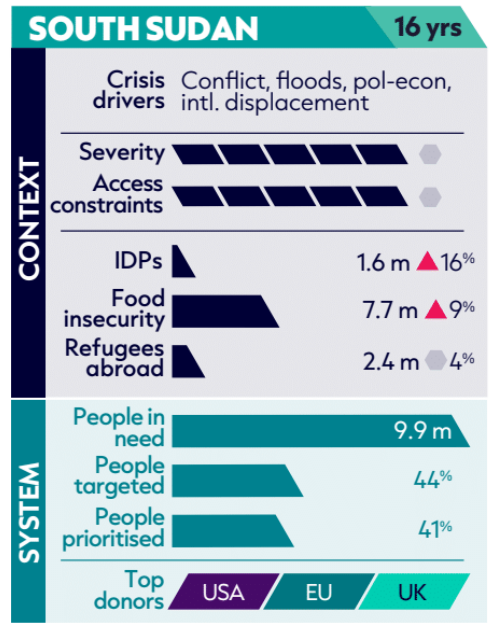
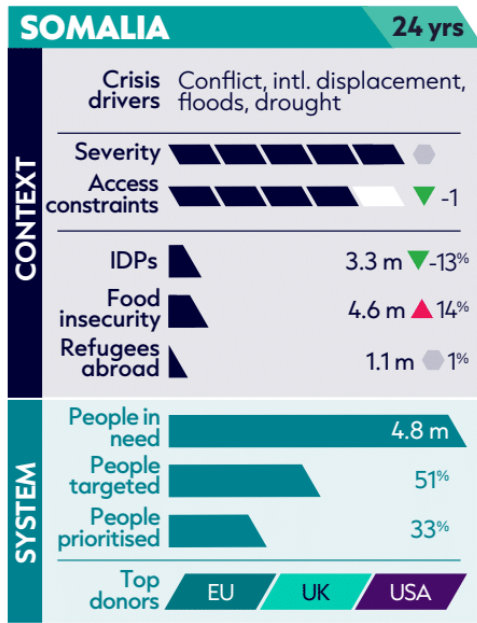
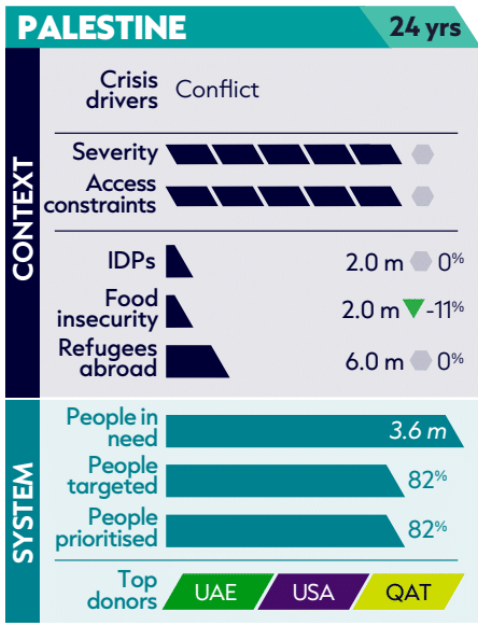


MALI 15 yrs



MYANMAR 14 yrs





AUS = Australia; DRC = Democratic Republic of the Congo; FRA = France; GER = Germany; HC = host community; IDP = internally displaced person; NOR = Norway; pol-econ = political and economic; QAT = Qatar; SAU = Saudi Arabia; SWI = Switzerland; TUR = Türkiye; UAE = United Arab Emirates.

Notes: Number of years next to each country denotes the number of years of consecutive response plans. **Sources:** Number of years of response plans UN Office for the Coordination of Humanitarian Affairs (OCHA)'s Financial Tracking Service (FTS). Crisis drivers and severity from the Inform Severity Index. Access constraints from ACAPS humanitarian access database. IDPs from IDMC's Global Internal Displacement Database. Food insecurity from the Global Report on Food Crises datasets. Refugees abroad from United Nations High Commissioner for Refugees (UNHCR)'s Refugee Data Finder. People in need, people targeted, people prioritised, refugee populations, and host community population from Humanitarian Action and individual response plan documents. Top donors and funding trends from UN OCHA's FTS.